



GMT MONTHLY MEMBERSHIP PROGRESS REPORT

Results as of: 1/31/2020

GMT Constitutional Area 4, Group B

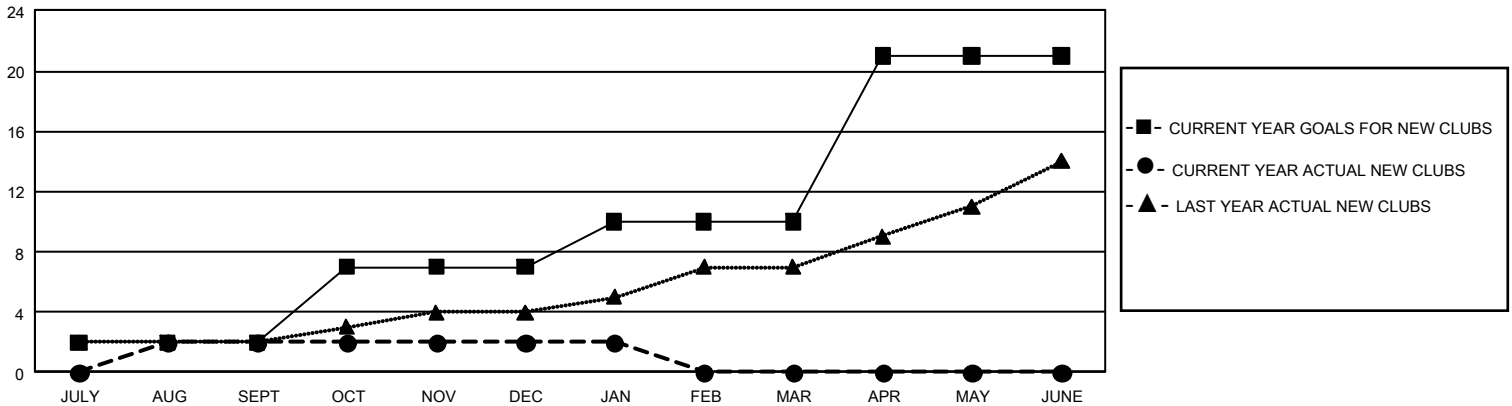
GMT: OPEN

REPORT DOES NOT INCLUDE CLUBS IN UNDISTRICTED AREAS.

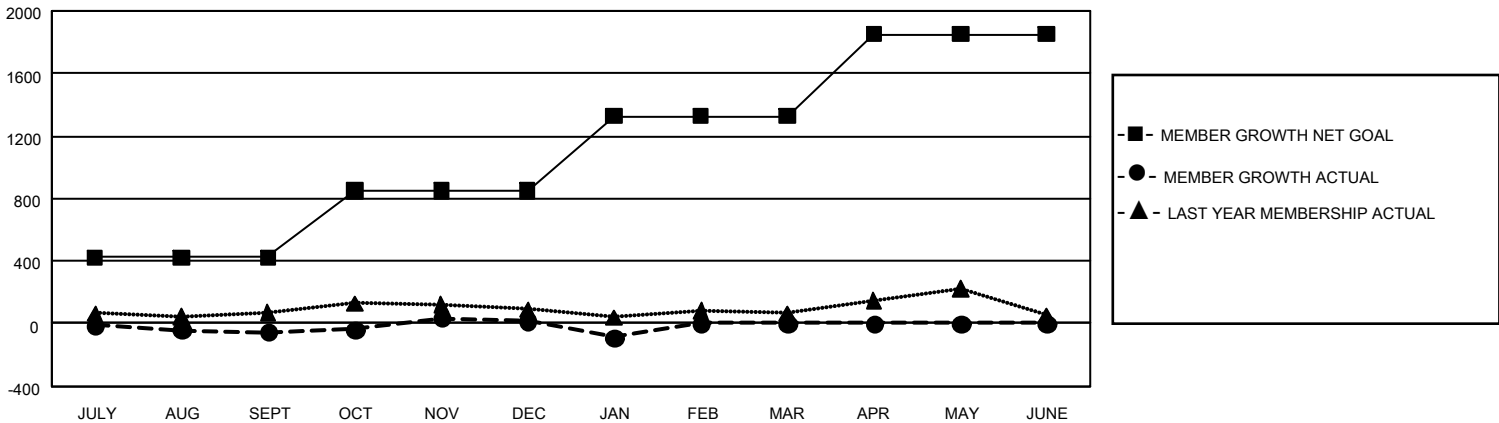
Clubs			
RESULTS FOR 2019-2020			
QUARTER	NEW CLUB GOAL	NEW CLUBS	DROPPED CLUBS
JULY/AUG/SEPT	6	2	1
OCT/NOV/DEC	15	0	1
JAN/FEB/MAR	9	0	1
APR/MAY/JUNE	33	0	0

Members			
RESULTS FOR 2019-2020			
QUARTER	MEMBER GROWTH NET GOAL	MEMBER GROWTH ACTUAL	DROPPED MEMBERS ACTUAL (including transfers)
JULY/AUG/SEPT	1,272	733	723
OCT/NOV/DEC	1,284	654	535
JAN/FEB/MAR	1,425	236	324
APR/MAY/JUNE	1,575	0	0

GOALS AND ACTUAL NEW CLUBS CUMULATIVE



GOALS AND ACTUAL MEMBERS CUMULATIVE



DROPPED CLUBS: 3	885 CLUBS OF 2,106 ADDED 1 OR MORE NEW MEMBERS	<u>GENDER DISTRIBUTION</u>	
<u>DROPPED MEMBERS</u>		MALE	60,729 (84.78%)
DECEASED	398	FEMALE	10,902 (15.22%)
CLUB CANCELLED	43	TOTAL FAMILY UNIT MEMBERS 846	
OTHER	1,140	FAMILY MEMBERS PAYING HALF DUES 406	
TOTAL	1,581		

[CLICK HERE FOR CUMULATIVE MEMBERSHIP DATA](#)